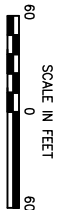
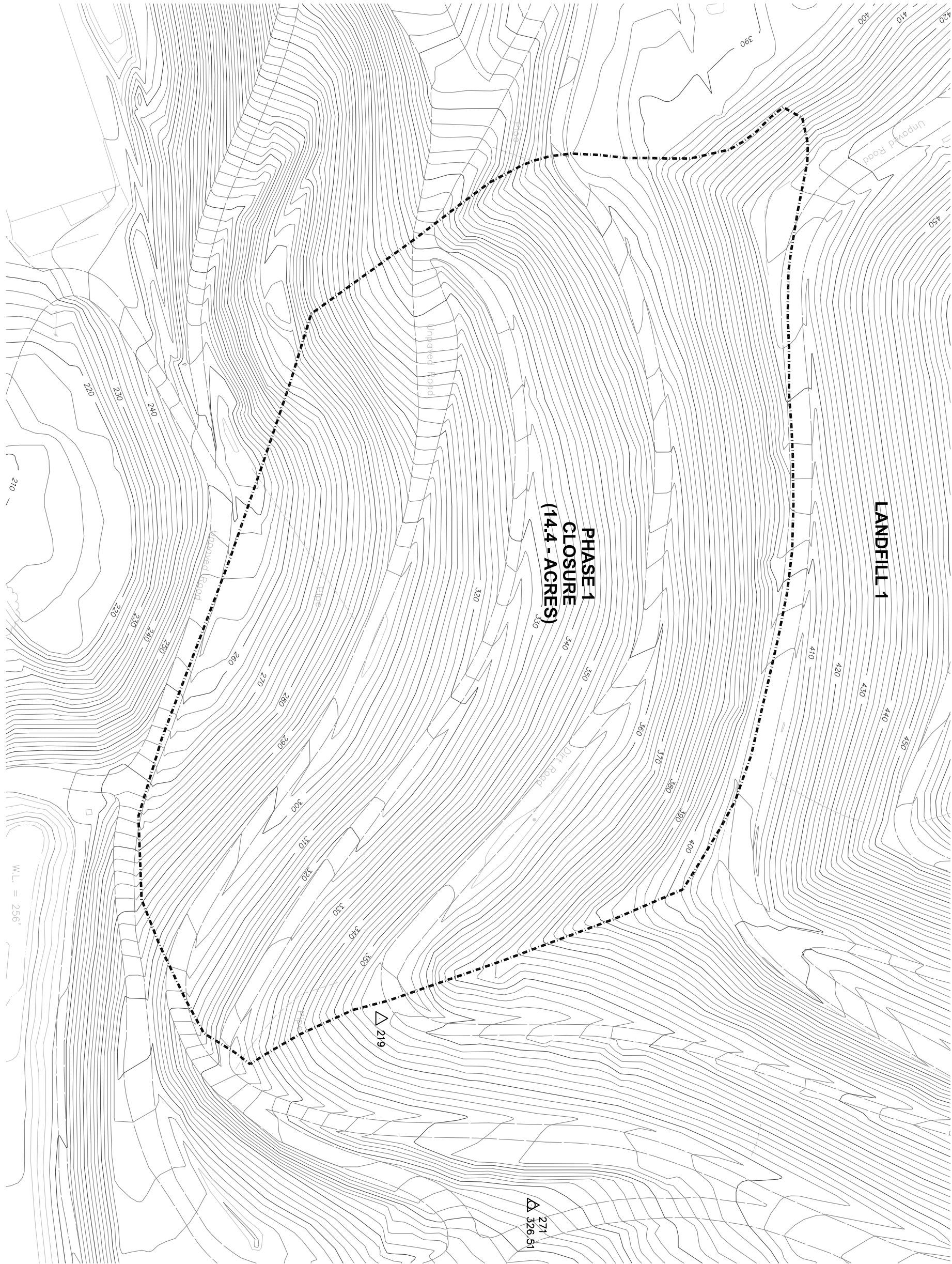


APPENDIX A
PRELIMINARY DESIGN DRAWINGS

DRAWING IS HALF-SIZE AT 11x17



LEGEND:

- PHASE 1 CLOSURE
- SURVEY CONTROL
- EXISTING DRAIN PIPE
- EXISTING MAJOR CONTOURS
- EXISTING MINOR CONTOURS

NOTES:

1. AERIAL TOPOGRAPHY PROVIDED BY THE COUNTY, TOPOGRAPHY ORIGINATED IN 2007 AND MODIFIED ON 1/7/11.

CK. BY	DESCRIPTION	DATE	REV
AAM	PM REVIEW	02-17-11	1
AAM	CLIENT COMMENTS	03-24-11	2
			3
			4
			5
			6

SHEET TITLE	PROJECT TITLE
EXISTING TOPOGRAPHY AND SURVEY CONTROL PHASE 1 CLOSURE	PHASE 1 PARTIAL FINAL CLOSURE SONOMA CENTRAL LANDFILL

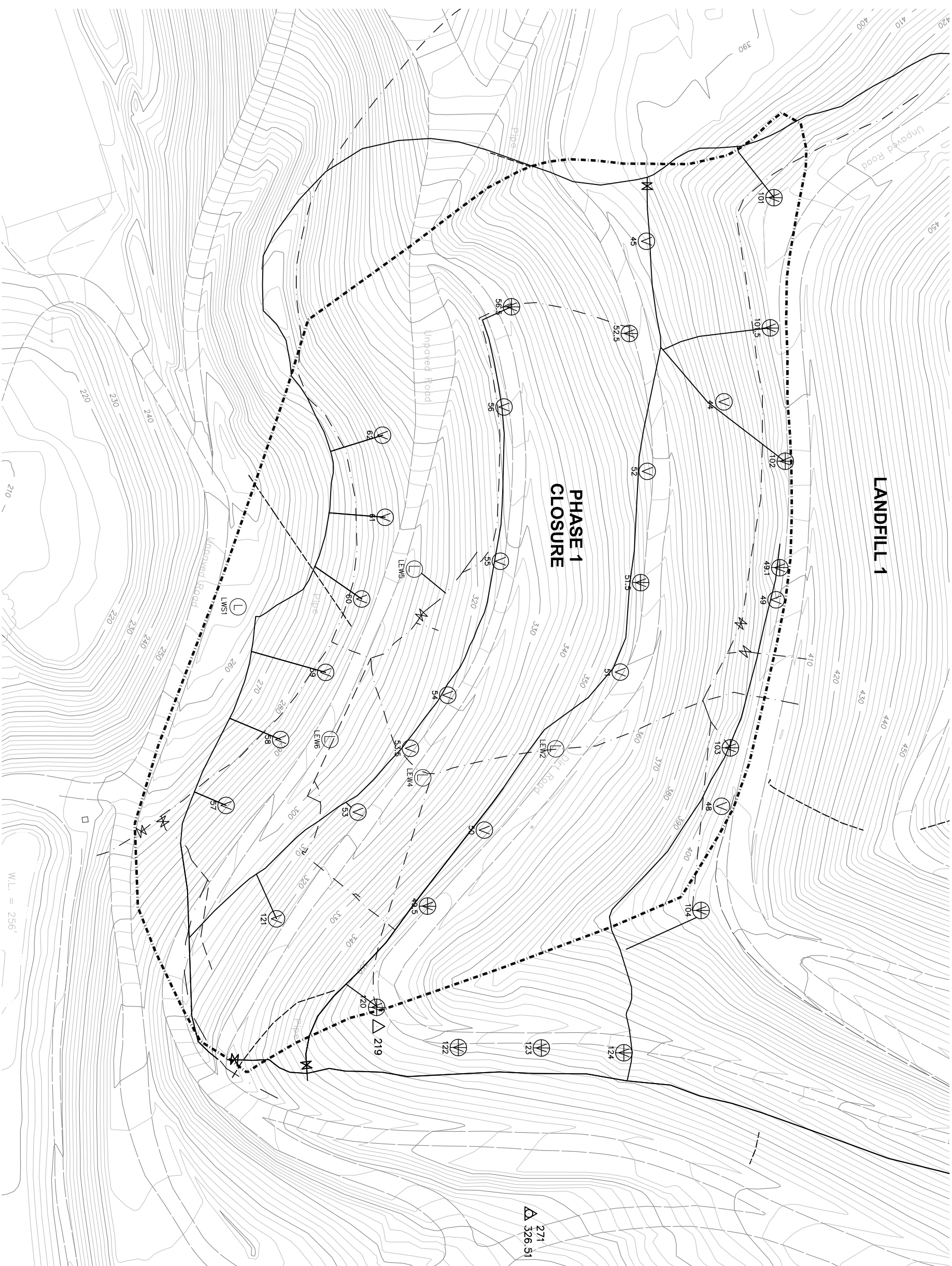
CLIENT
COUNTY OF SONOMA DEPARTMENT OF TRANSPORTATION AND PUBLIC WORKS PETALUMA, CA 94952

SCS ENGINEERS		
STEARNS, CONRAD, AND SCHMIDT CONSULTING ENGINEERS, INC. 6601 KOLL CENTER PARKWAY, SUITE 140 PLEASANTON, CA 94566 PH. (925) 426-0080 FAX. (925) 426-0707		
PROJ. NO. 01210155.00	DWN. BY: MJE	ACAD FILE: FIG-1
DSN. BY: MJE	CHK. BY: AAM	APP. BY: JJM

CADD FILE:	DATE:	SCALE:	SHEET:
PHASE 1 EC_FG_1	12-29-10	AS SHOWN	1

PRELIMINARY

NOT FOR CONSTRUCTION



REV	DATE	DESCRIPTION	CK. BY
△	02-17-11	PM REVIEW	AAM
△	03-24-11	CLIENT COMMENTS	AAM
△			
△			
△			
△			

SHEET TITLE
EXISTING ENVIRONMENTAL CONTROL SYSTEMS PHASE 1 CLOSURE
PROJECT TITLE
PHASE 1 PARTIAL FINAL CLOSURE SONOMA CENTRAL LANDFILL

CLIENT

COUNTY OF SONOMA
DEPARTMENT OF TRANSPORTATION
AND PUBLIC WORKS
PETALUMA, CA 94952

SCS ENGINEERS

STEARNS, CONRAD, AND SCHMIDT
CONSULTING ENGINEERS, INC.
6601 KOLL CENTER PARKWAY, SUITE 140
PLEASANTON, CA 94566
PH. (925) 426-0080 FAX. (925) 426-0707

PROJ. NO. 01210155.00	DWN. BY: MJE	ACAD FILE: FIG_2
DSN. BY: MJE	CHK. BY: AAM	APP. BY: JUM

1. EXISTING ENVIRONMENTAL CONTROL SYSTEMS LOCATIONS SHOWN ARE APPROXIMATE AND MAY NOT BE ALL INCLUSIVE. LOCATIONS TAKEN FROM PACIFIC GEOSCIENCE, FIGURE 1.
2. IN SOME CASES, LATERAL EXTENSIONS WERE PLACED TO SHOW CONNECTIVITY TO HEADER.

NOTES:

EXISTING CONTROL VALVE

EXISTING VERTICAL
LEACHATE EXTRACTION WELL

EXISTING DUAL
LFG/LEACHATE VERTICAL
EXTRACTION WELL

EXISTING LFG VERTICAL
EXTRACTION WELL

— 380 —

EXISTING MAJOR CONTOURS

EXISTING DRAIN PIPE


271	SURVEY CONTROL
326 51	

PHASE 1 CLOSURE

LEGEND:

SCALE IN FEET

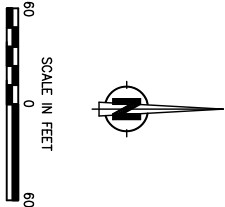
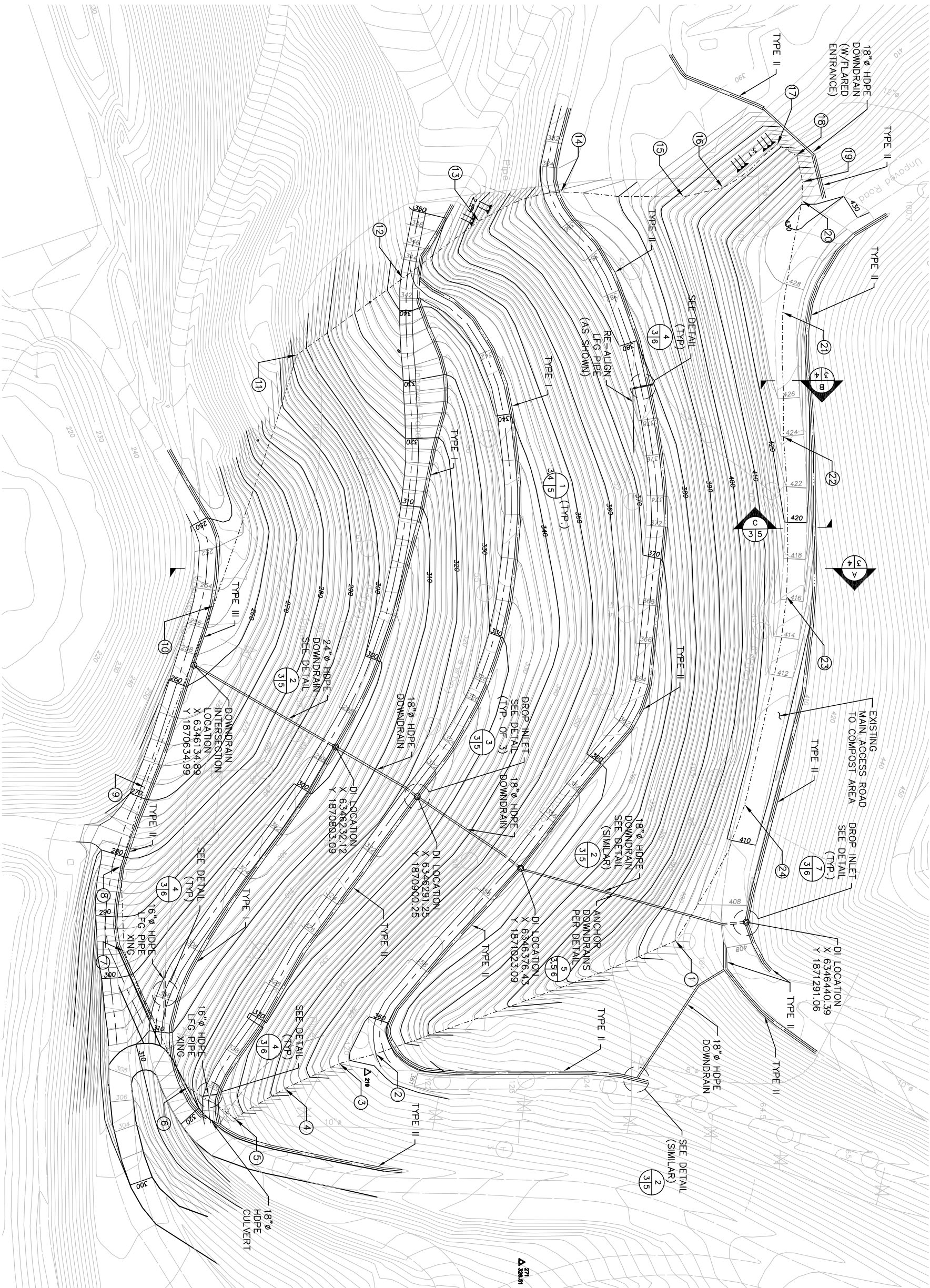
60 0 60



PRELIMINARY

NOT FOR CONSTRUCTION

DRAWING IS HALF-SIZE AT 11x17



LEGEND:

- EXISTING LFG WELL
- PHASE I CLOSURE
- EXISTING MAJOR CONTOURS
- NEW FINAL MAJOR CONTOURS
- NEW FINAL MINOR CONTOURS
- DRAINAGE/LFG PIPE CULVERT
- DRAINAGE
- DOWNDRAIN
- DRAINAGE DITCH
- 271 SURVEY CONTROL POINT
- 326.51

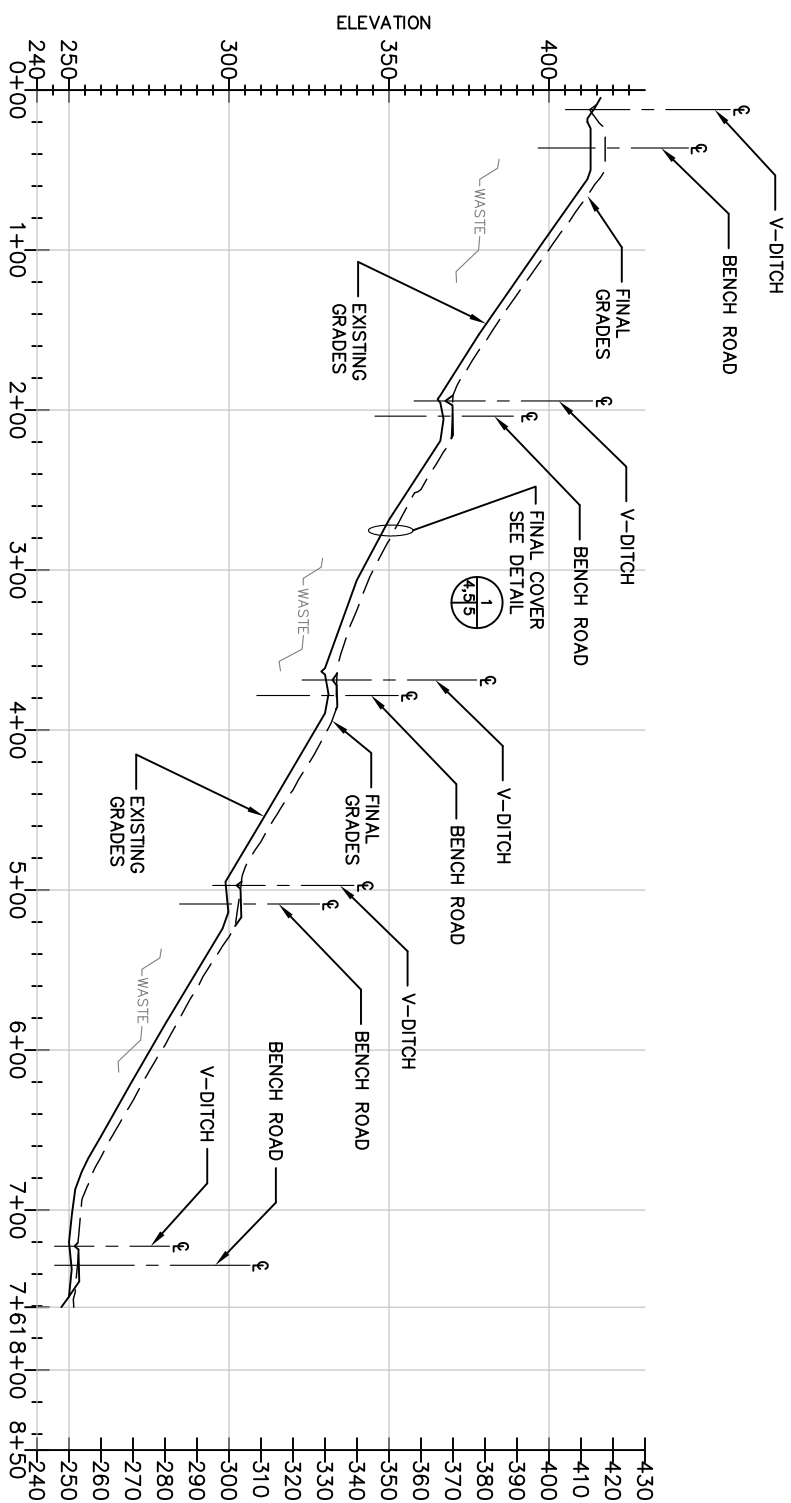
BOUNDARY SURVEY INFO:

1	1871206.9190'	6346462.4328'
2	1870851.0464'	6346396.8835'
3	1870807.5976'	6346608.3315'
4	1870742.8056'	6346638.0962'
5	1870683.3493'	6346673.9664'
6	1870627.3309'	6346636.5513'
7	1870551.8672'	6346474.7153'
8	1870548.0559'	6346374.0117'
9	1870576.2595'	6346280.1385'
10	1870658.0172'	6346064.7361'
11	1870757.1110'	6345766.3262'
12	1870883.2817'	6345675.3010'
13	1870973.2284'	6345607.3765'
14	1871070.9858'	6345572.5876'
15	1871216.3672'	6345578.4716'
16	1871263.2603'	6345567.6605'
17	1871328.0007'	6345516.4931'
18	1871350.7433'	6345529.1749'
19	1871358.0423'	6345560.7106'
20	1871357.2801'	6345582.8433'
21	1871334.4123'	6345715.6395'
22	1871335.1746'	6345863.6997'
23	1871338.9507'	6346053.1665'
24	1871289.2643'	6346300.4596'

PRELIMINARY

NOT FOR CONSTRUCTION

SHEET:	SCALE:	DATE:	CADD FILE:	SCS ENGINEERS			CLIENT	SHEET TITLE		REV	DATE	DESCRIPTION	CK. BY
				FINAL GRADING AND DRAINAGE PLAN PHASE 1 CLOSURE		PROJECT TITLE							
3	AS SHOWN	01-11-11	PHASE 1 FG_FIG_3	STEARNS, CONRAD, AND SCHMIDT CONSULTING ENGINEERS, INC. 6601 KOLL CENTER PARKWAY, SUITE 140 PLEASANTON, CA 94566 PH. (925) 426-0080 FAX. (925) 426-0707			COUNTY OF SONOMA DEPARTMENT OF TRANSPORTATION AND PUBLIC WORKS PETALUMA, CA 94952	PHASE 1 PARTIAL FINAL CLOSURE		△	02-17-11	PM REVIEW	AAM
				PROJ. NO. 01210155.00	DWN. BY: MJE	ACAD FILE: FIG_3		SONOMA CENTRAL LANDFILL		△	03-24-11	CLIENT COMMENTS	AAM
				DSN. BY: MJE	CHK. BY: AAM	APP. BY: JJM				△			
										△			
										△			
										△			
										△			

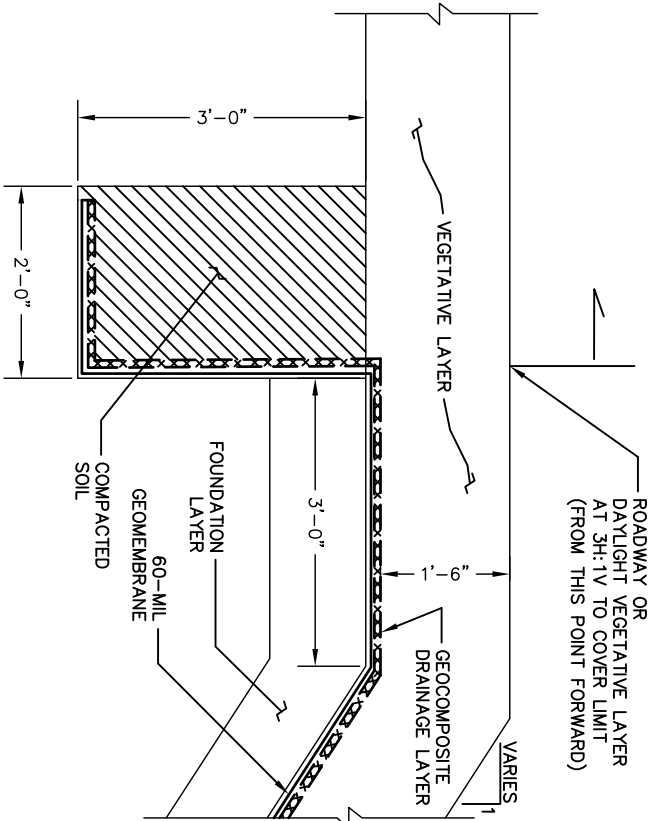


SECTION -- FINAL GRADING

SCALE: H: 1"=60'

A

3 4



SECTION -- LINER ANCHOR

SCALE: 1"=1'

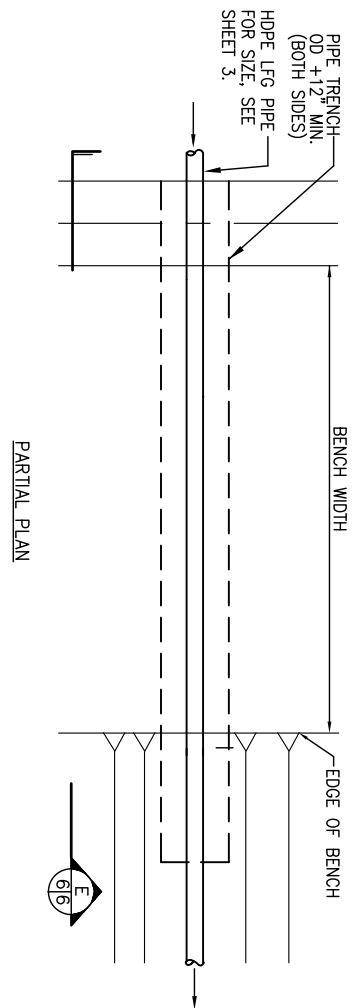
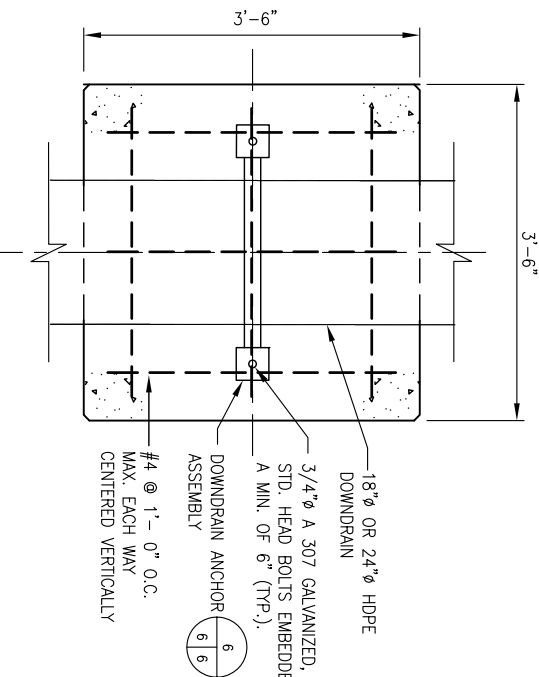
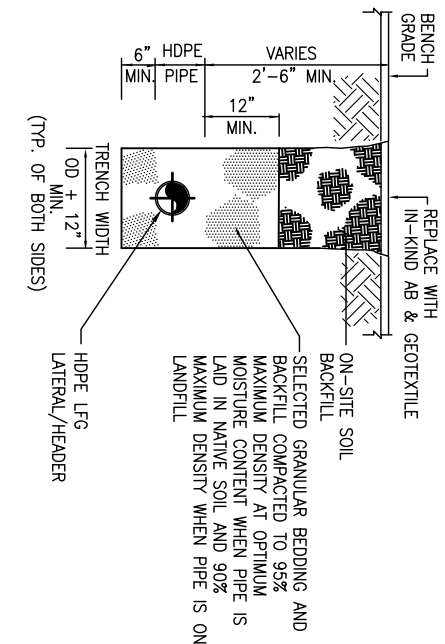
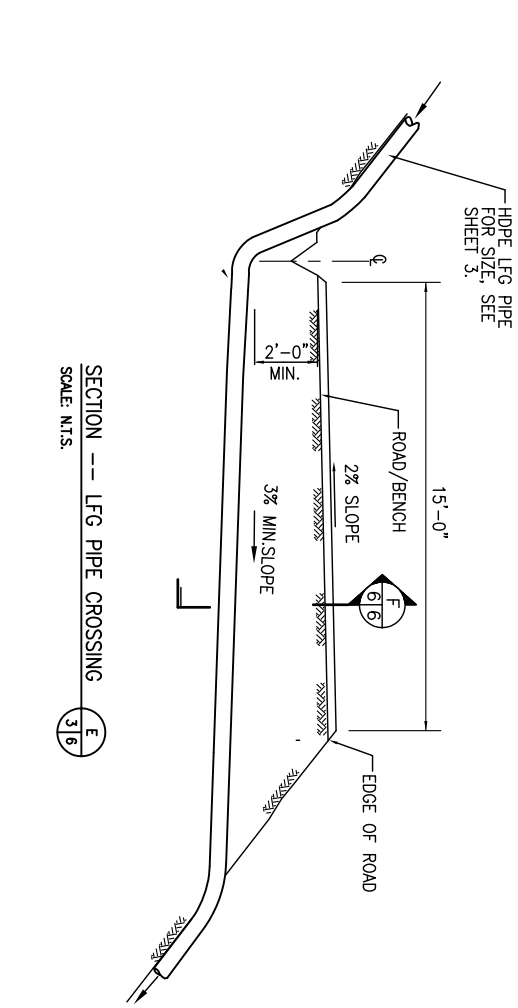
B
3 4

PRELIMINARY

NOT FOR CONSTRUCTION

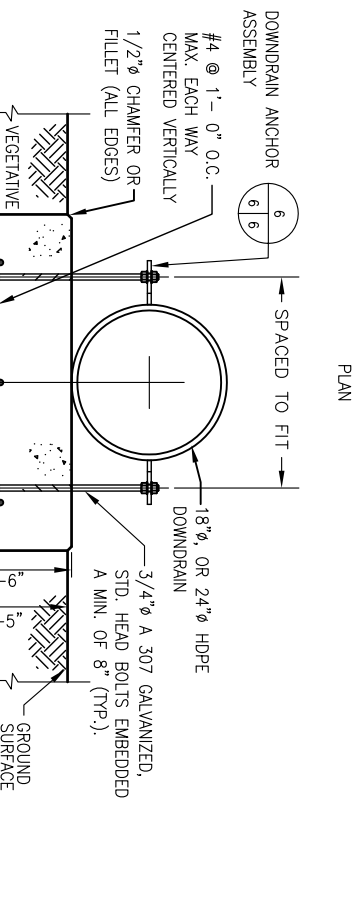
SHEET: 4	SCALE: AS SHOWN	DATE: 12-29-10	CADD FILE: PH. 1 SECTION_Fig_4	SCS ENGINEERS			CLIENT COUNTY OF SONOMA DEPARTMENT OF TRANSPORTATION AND PUBLIC WORKS PETALUMA, CA 94952	SHEET TITLE SECTIONS PHASE 1 CLOSURE		REV	DATE	DESCRIPTION	CK. BY
				STEARNS, CONRAD, AND SCHMIDT CONSULTING ENGINEERS, INC. 6601 KOLL CENTER PARKWAY, SUITE 140 PLEASANTON, CA 94566 PH. (925) 426-0080 FAX. (925) 426-0707		PROJECT TITLE PHASE 1 PARTIAL FINAL CLOSURE SONOMA CENTRAL LANDFILL		△	02-17-11	PM REVIEW			
								△	03-24-11	CLIENT COMMENTS	AAM		
								△					
								△					
								△					
PROJ. NO. 01210155.00		DWN. BY: MJE	ACAD FILE: FIG_4										
DSN. BY: MJE		CHK. BY: AAM	APP. BY: JJM										





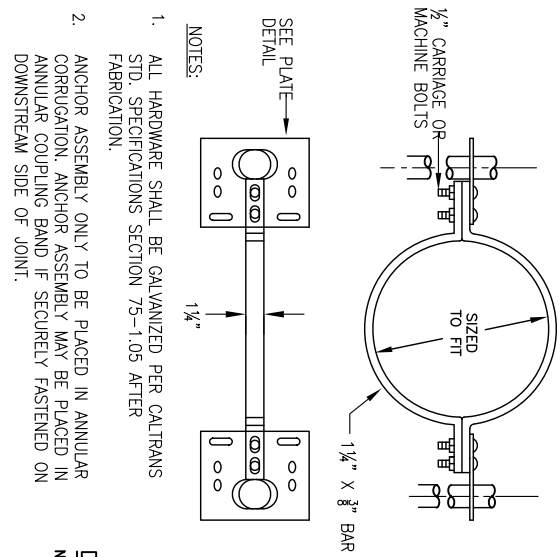
HDPE PIPE (HDPE)

A. HDPE SINGLE WALL PIPE FURNISHED AND INSTALLED UNDER THIS CONTRACT SHALL CONFORM TO THE REQUIREMENTS OF PE3408 OR NEWER REVISION. THE DIAMETER OF HDPE SHALL BE AS SHOWN ON THE HDPE PIPE SCHEDULE. THE HDPE SHALL ALSO BE STANDARD DIMENSION RATIO (SDR) 32.5.



DETAIL --- LFG PIPE ROAD BENCH CROSSING
SCALE: N.T.S.

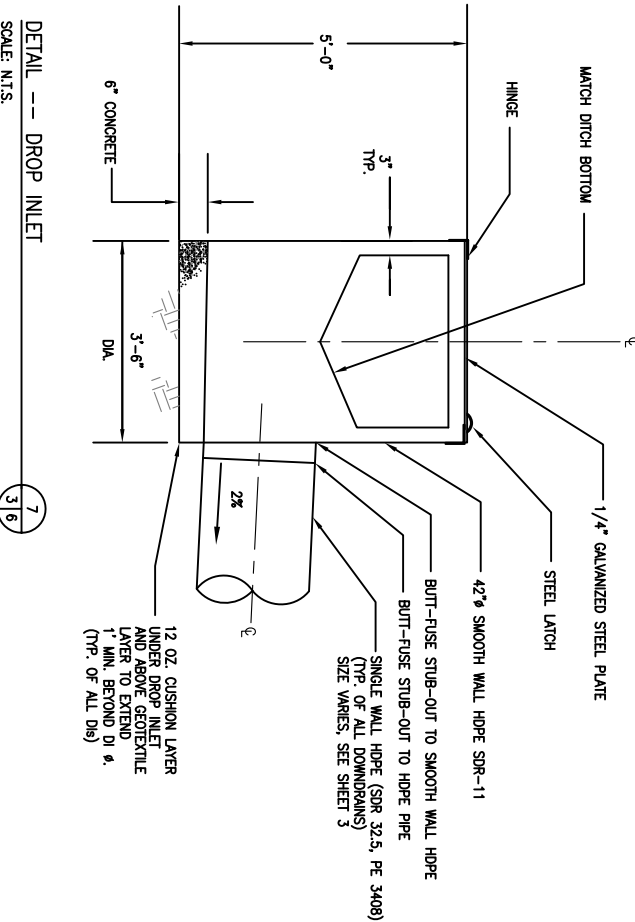
4
3 6



DETAIL --- DOWNDRAIN ANCHOR ASSEMBLY
SCALE: N.T.S.

6
6 6

- NOTES:
1. ALL HARDWARE SHALL BE GALVANIZED PER CALTRANS STD. SPECIFICATIONS SECTION 75-1.05 AFTER FABRICATION.
 2. ANCHOR ASSEMBLY ONLY TO BE PLACED IN ANNUAL CORRUGATION. ANCHOR ASSEMBLY MAY BE PLACED IN ANNUAL COUPLING BAND IF SECURELY FASTENED ON DOWNSIDE OF JOINT.
 3. PLATE MATERIAL TO BE 1/4" PLATE GALVANIZED AFTER FABRICATION.
 4. ANCHORS SHALL BE PLACED AT 100' OC IN ALL DOWNSIDE LOCATIONS.
 5. CONTRACTOR SHALL INSTALL ALL HDPE DOWNSIDES TO ENSURE THAT PROPER PIPE LENGTH IS PLACED TO ALLOW FOR THERMAL CONTRACTION AND EXPANSION AT TIME OF ASSEMBLY.



NOT FOR CONSTRUCTION

CLIENT

COUNTY OF SONOMA
DEPARTMENT OF TRANSPORTATION
AND PUBLIC WORKS
PETALUMA, CA 94952

SHEET TITLE

DETAILS
PHASE 1 CLOSURE

PROJECT TITLE

PHASE 1 PARTIAL FINAL CLOSURE
SONOMA CENTRAL LANDFILL

REV	DATE	DESCRIPTION	CK. BY
1	02-17-11	PM REVIEW	AAM
2	03-24-11	CLIENT COMMENTS	AAM
3			
4			
5			
6			

SCS ENGINEERS			
STEARNS, CONRAD, AND SCHMIDT CONSULTING ENGINEERS, INC. 6601 KOLL CENTER PARKWAY, SUITE 140 PLEASANTON, CA 94566 PH. (925) 426-0080 FAX. (925) 426-0707			
PROJ. NO. 01210155.00	DWN. BY: MJE	ACAD. FILE: FIG_6	
DSN. BY: MJE	CHK. BY: AAM	APP. BY: JUM	

CAOD FILE:	DATE:	SCALE:
PHASE 1 DETS, FIG. 6..	02-21-11	AS SHOWN
SHEET:		
6		